

Technical Session

04

Strengthening the Backbone: Capacity Building and Institutional Systems for Safe Sanitation

Moderated by



Mr. Anurag Anthony

Vice President,
Urban Management Centre

Context Presentation



Dr. Shantanu Rath
Director,
Odisha Urban Academy



Ms. Pamela Sathpathy, IAS
Collector - Karimnagar,
Govt. of Telangana



Ms. Mahreen Mattoo
Team Lead, TMRC,
NIUA



Mr. Xerxes Rao
Vice President,
Urban Management Centre



Mr. Aseem Acharya
Director Programs,
BORDA South Asia



Mr. V R Raman
Sanitation Expert

Setting a Robust Training Ecosystem For Garima



Target Groups for Training Programs



1. Core Sanitation Workers -

All Job Roles:

Capacity building on occupational safety.



2. Sewer Entry Professionals

For Entrant and Attended:

Specialized training on confined space entry, covering both theory and practical aspects.



3. Urban Local Body (ULB)

Officials & PSSOs:

Capacity building on safety protocols, legal responsibilities, and enforcement.

State Level Robust Training Ecosystem

1. Establishing decentralized training infrastructure with simulation models



2. Establishing a Cadre of Master Trainers



3. Establishing a Training Pedagogy



Impact of the trainings in Odisha

Odisha has successfully conducted training of-

~850+

Sewer Entry Professionals

15

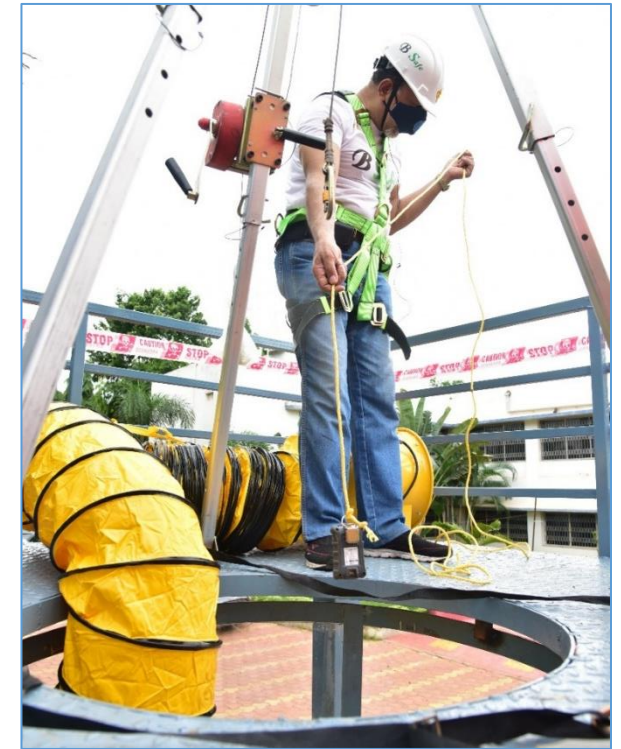
PSSOs

70

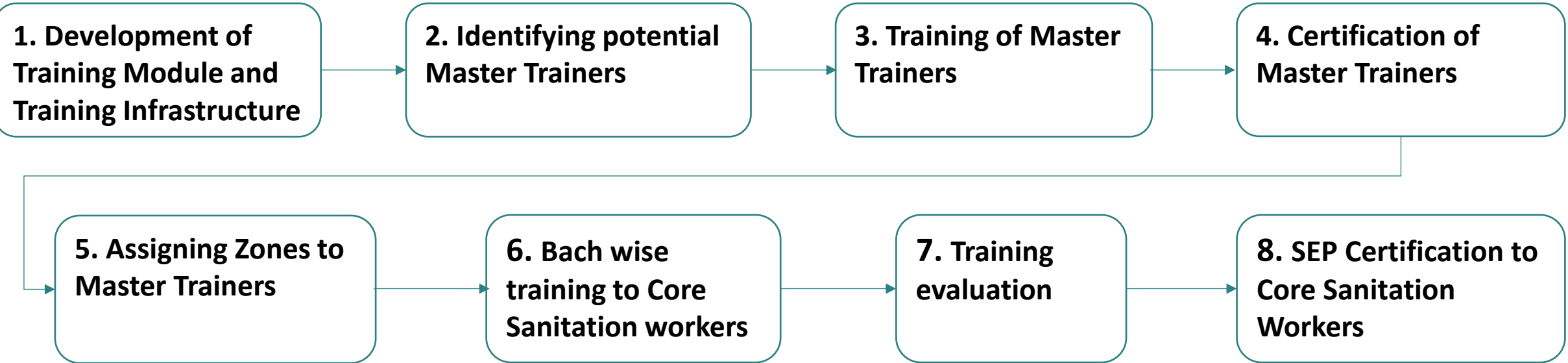
Duty Supervisors

18

Master Trainers



Establishing a End-to-End Training & Certification Process



Creation of Training Infrastructure

OUA's Training Centres in Bhubaneswar, Sambalpur, and Rourkela

Each training centre has:

- **Simulation septic tank and maintenance hole model** for delivering hands-on, practical training on real-life scenarios.
- **Safety devices** to ensure safe sanitation practices.
- **Machines** provided for operational training, in using mechanized tools.



Establishing a Cadre of Master Trainers

Master Trainers are key facilitators of the SEP training program, delivering theoretical and practical sessions, adapting content to regional needs, maintaining training quality, and assessing participants for certification.



Training Pedagogy

Training Pedagogy for SEP Training

**20% Theoretical +
80% Practical (live
demonstrations,
case studies, and
interactive game-
based exercises)**

**Assessment
framework -
Pictorial form
(pre and post
assessment)**

Certification

3 days Residential Training



Developing training modules

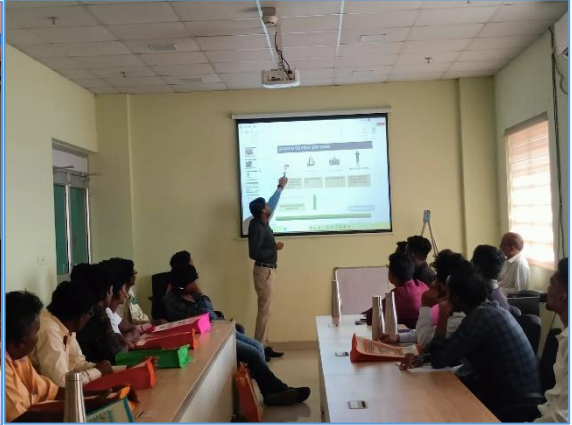
6 training modules developed



01 - Training for Sewer Entry Professionals: Safe Confined Space Entry

Three day training program

Transforming the lives of Core Sanitation Workers




Pre and Post Assessment

ଦିଲ୍ଲୀ ସଂସଦ


ଗାଲିମ ପୂର୍ବ ଆକଳନ

ସିଠର ଏଣ୍ଡ୍ରୋ ଯୋଗାଯୋଗର ଗାଲିମ; ଅଗଷ୍ଟ ୧୨ - ୧୩, ୨୦୨୧

୧. ସେହିର ନର ଗାଢ଼ ଦିଏ ସିଠର ଲାଭର ଲକ୍ଷଣାବେଶର ଗାଠରେ ପ୍ରବେଶ କରିବା ସମୟରେ ବ୍ୟବହୃତ ଦ୍ୟବିତର ଦିଗର ଲାଭର ଲକ୍ଷଣାବେଶର ଚିତ୍ରରେ ଚିହ୍ନିତ କରନ୍ତୁ:



୨. ସେହିର ନର ଗାଢ଼ ଦିଏ ଆବକ ଶ୍ଚାରେ ବାଗ ଦିରବା ସମୟରେ ବ୍ୟବହୃତ ଯାନ୍ତ୍ରିକ ଲାଭର ଲକ୍ଷଣାବେଶର ଚିତ୍ରରେ ଚିହ୍ନିତ କରନ୍ତୁ:




Pre assessment form

ଗାଲିମ ପରବର୍ତ୍ତୀ ଆକଳନ


ସିଠର ଏଣ୍ଡ୍ରୋ ଯୋଗାଯୋଗର ଗାଲିମ *Sadam boheira*

୧. ଆବକ ଶ୍ଚାରେ ବାଗ ଦିରବା ସମୟରେ ବ୍ୟବହୃତ ପ୍ରକାର ଗାଲିମ କଣ?




(କ) ଦାରିଦ୍ରୀ ଆବକ କରଣ (ଖ) ଦିଶାଦ ଦିଶାଦ ପରାଶ୍ରା କରଣ (ଗ) ଦିଶାଦର ପ୍ରବୃତ୍ତ ପ୍ରକାର କରଣ ବଦଳି ଆବକ ଶ୍ଚାରେ ପ୍ରବେଶ କରଣ

୨. ବାୟୁ ଚଳାଚଳ ଚିତ୍ରରେ ଦେଖାଯି ସିଠର ଲାଭର ନର ପ୍ରବୃତ୍ତ ଗୋଲା ଲକ୍ଷଣାବେଶ ?



(କ) ଅଧିକ ନା ଦା (ଖ) କେବଳ ଗୋଟିଏ

୩. ଦର୍ଶା ଯାଦ ଥିବା ଫୋଟୋରେ ଦେଖି ବ୍ୟବହାର ବିଶୟରେ କୁହନ୍ତା ?



୧. ଗତକାଳର ଦିଶା ପ୍ରକାର ଦିଶାଦ ଅଧିକାର

୨. ଗତକାଳର ଦିଶା ଅଧିକାର

Post assessment form



Simple pictorial assessments in local language

Certification

Convergence with OUA to offer certification to all SEPs



Thank You

